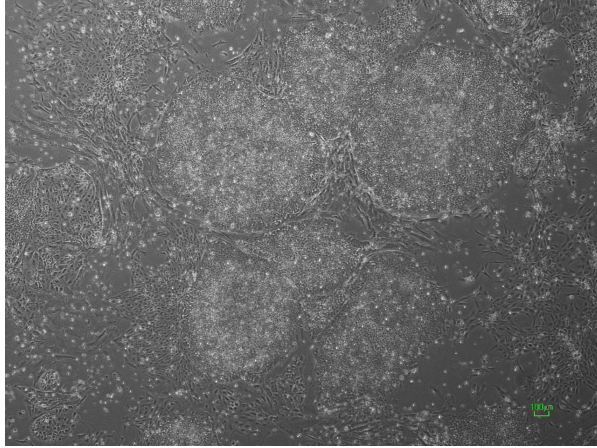
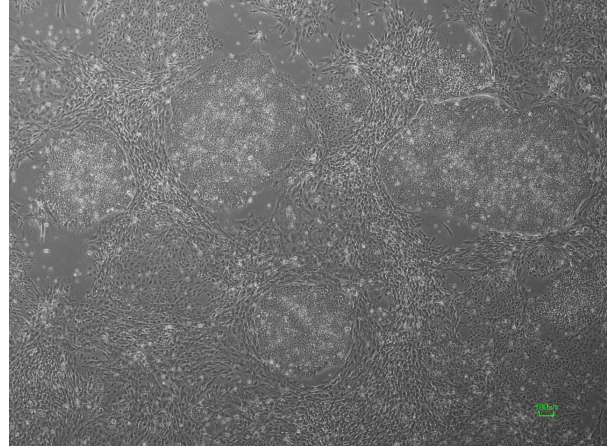


【 CiRA-jk-0039 】 Morphology of iPSC colonies

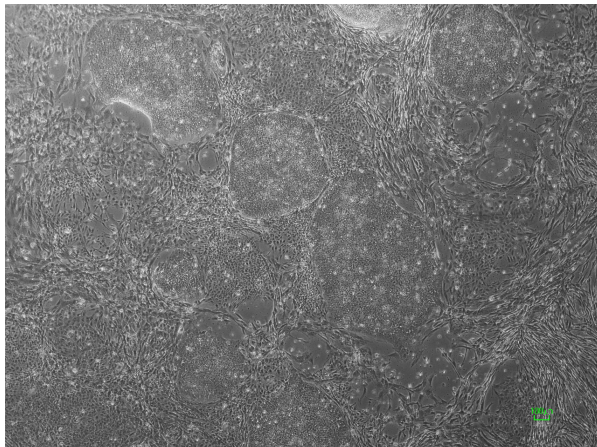
CiRA -jk-0039-A: passage-2



CiRA -jk-0039-B: passage-2



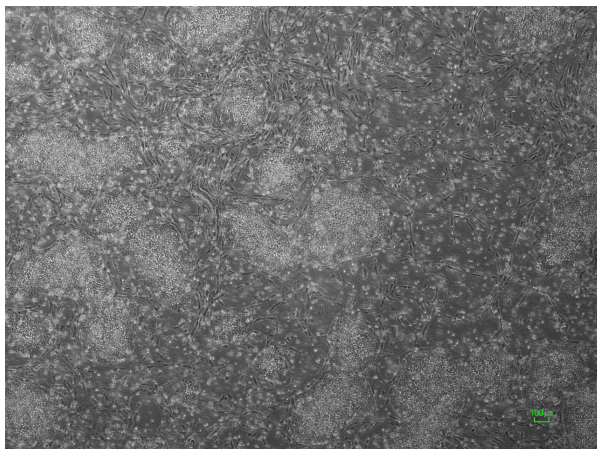
CiRA -jk-0039-C: passage-2



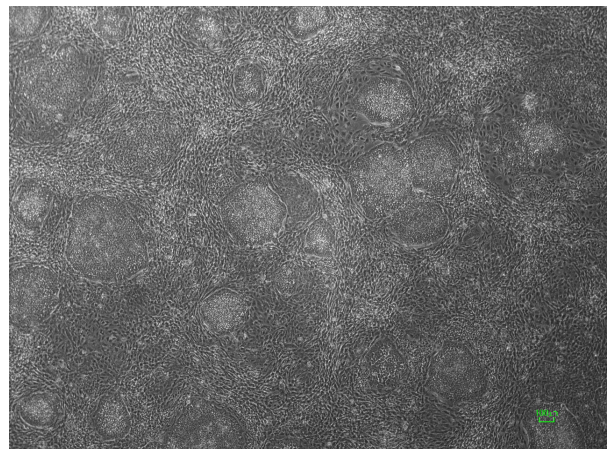
CiRA -jk-0039-D: passage-2



CiRA -jk-0039-E: passage-3



CiRA -jk-0039-F: passage-3



(All images were captured at 4x magnification)